

Stay Informed

We commend to you the following sources of local news:

The Westbury HOA website! www.westburyhoa.us/news

Your neighborhood newsletter, The Association Press (monthly). It shows up in your driveway the first week of each month.

Nextdoor.com, where our neighborhood address is <https://foothillgreensouth.nextdoor.com>

The Columbine Courier (weekly). Pick up a free copy at Walgreens, or subscribe at www.columbinecourier.com and they'll mail a printed copy and/or give you unlimited website access.

Get Involved

Have questions about the neighborhood? Please feel free to contact me or anyone on the HOA Board. Got some ideas? Come to a monthly meeting! Want to meet some neighbors? Join us at an upcoming community event! For dates, locations, and details see the newsletter or visit www.westburyhoa.us.

And again ... welcome to Westbury.

Your neighbor,

Clay Cromley
President, Westbury HOA
303-997-7658

Westbury Welcomes You



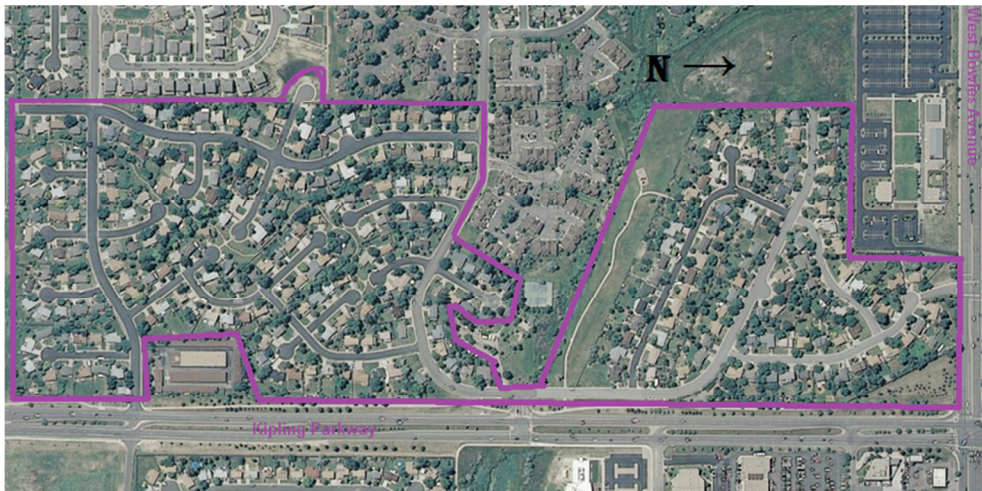
New neighbor packet

December 2015

Table of Contents

The HOA	3
The County	4
Parks & Rec	4
Local attractions	4
Climate	5
Fireplace restrictions	5
DMV	5
Animals among us	6
Elected representatives	7
Trash pickup	7
Stay informed	8
Get involved	8

Westbury



Your Elected Representatives (as of 12/2015)

U.S. Senate: Michael Bennet, Mark Udall

U.S. House: Diana DeGette

Colorado Senate: Andy Kerr

Colorado House: Justin Everett



Most balloting in Colorado is done by mail. To vote or drop off your ballot at a physical polling location, the nearest one is the DMV office at 11139 Bradford Road, Littleton 80127.

Trash Service Options

Prices are approximate monthly averages as of summer 2014. Ask for senior discounts and current promotional rates. Watch for setup fees or rate rises after first year.

Allied/Republic 303-900-5158

\$24 trash, \$32 trash+recycle, delivery, carryout available for extra fee.

Pro Disposal 303-791-3827

\$22 trash, \$23 trash+recycle.

Waste Connections 303-288-2100

\$27 trash+recycle incl. setup. Carryout available for extra fee.

Waste Management 866-434-1734

\$21 trash+recycle covers only one container each.
\$40 unlimited trash+recycle. can delivery, carryout available for extra fee.



Animals Among Us

Westbury has coyotes, foxes, and raccoons living nearby, occasionally prowling our sidewalks and yards.

Residential areas provide habitat for these animals. Some have adapted to the presence of humans, and have lost their natural fear of us. Coyotes are attracted to neighborhoods due to the availability of garbage, pet food and even pets, which they see as prey. Remove these attractants to discourage wild animals from visiting your property:



- Outdoor pet food or water
- Birdseed or food sources that attract small mammals
- Accessible garbage or compost
- Fallen fruit or berries from trees or shrubs
- Shrubs, woodpiles, decks or any other structure that can provide cover or be used as a den
- Dogs and cats allowed to roam free, and/or female dogs in heat

Discourage a Coyote's Approach

You can help both people and coyotes by taking action to re-instill them with a healthy and natural fear of people. Clap your hands, yell, honk an air-horn or throw small rocks or sticks when you see coyotes so they can relearn to avoid humans.

- Be as big and loud as possible
- Wave your arms, clap and throw objects at the coyote
- Shout in a loud and authoritative voice
- Do not run or turn your back on the coyote
- Face the coyote and back away slowly

Report any encounter with an aggressive wild animal to Jefferson County Animal Control at 303-271-5070, or 303-277-0211 after normal business hours.

We're Glad You're Here

Welcome to Westbury! You are joining a community of 273 households, and we look forward to getting to know you. We have an unusual homeowners association in that it's a voluntary organization – we are here to promote neighborliness through a range of activities and programs. You can participate in none, any, or all of them. We ask for your support with voluntary annual dues of \$20. You can write a check and return in the enclosed envelope, pay online, or at most neighborhood events. This pamphlet outlines some of what we do, and also provides information we hope may prove helpful as you get unpacked.

The Homeowners Association

Bookmark our website, westburyhoa.us. You'll find information on upcoming meetings, neighborhood events, our original covenants, the monthly newsletter, and a link to pay dues.



Once a month, the neighborhood association gets together to socialize with a potluck dinner and then tackles the issues at hand. Any Westbury resident is welcome to attend and contribute views, and members in good standing (dues paid) can vote on matters discussed.

Other typical events your HOA sponsors:

- 🏠 Westbury picnic/barbecue, June
- 🏠 Ice cream social/National Night Out, August
- 🏠 Community garage sale, September
- 🏠 Large item dumpster drop, September
- 🏠 Community clean-up, November







Welcome to Jefferson County

Once an agricultural and mining area, Jefferson County is a thriving suburban, business, industrial, recreational and residential community. Outdoor lovers have many Jefferson County Open Space Parks, three national forests and two state parks from which to choose. The county's nationally recognized Open Space program offers a variety of outdoor activities. See the County Parks website (jeffco.us/parks) for information about the many activities and amenities offered.

Parks & Rec

Westbury has its own park in the middle of the subdivision. And as a resident of South Jefferson County you are eligible for discounts on programs and services offered by the Foothills Park & Recreation District. You are a 5-minute drive (or 15-minute walk) away from the nearest facility, named for the stream that runs through Westbury: Lilley Gulch Rec Center. Ridge Rec Center and Peak Wellness Center are also nearby. More info online at ifoothills.org.

Local Attractions

-  Bandimere Speedway
-  Botanic Gardens at Chatfield
-  Chatfield Reservoir
-  Colorado Trail
-  Coors Brewery
-  Dinosaur Ridge
-  Heritage Square
-  Red Rocks Park & Amphitheater
-  Tiny Town Railroad
-  Waterton Canyon



Climate

Average days of sunshine: 255 per year

Coldest month: January

Average temp: 30 degrees

Hottest month: July

Average temp: 74 degrees

Annual precipitation: 15.4 inches

Average annual snowfall: 60.3 inches

Average humidity: 40 percent

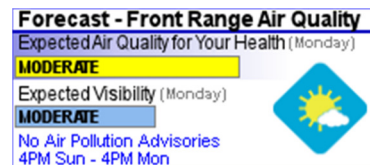
Westbury's USDA hardiness zone: 5b

The State Extension office is an excellent source for information on growing things in Colorado's challenging conditions: www.ext.colostate.edu/pubs/pubs.html



Fireplace Restrictions

In winter, the Denver metro area is subject to periodic atmospheric inversions that can cause significant drops in air quality. As a result the state may issue residential burning restrictions that prohibit the use of fireplaces. Check the



Westbury website for the current status: www.westburyhoa.us or call 303-758-4848 for air quality advisories.

Colorado Division of Motor Vehicles

The nearest office to obtain/renew a Driver's License or ID is

 5334 S Prince St, Littleton 80166

For vehicle registration, the nearest office is

 11139 Bradford Road, Littleton 80127

Speaking of air quality, if you need an emissions test there's an Air Care Colorado facility a few blocks from that DMV office at

 10727 Centennial Road, Littleton 80127